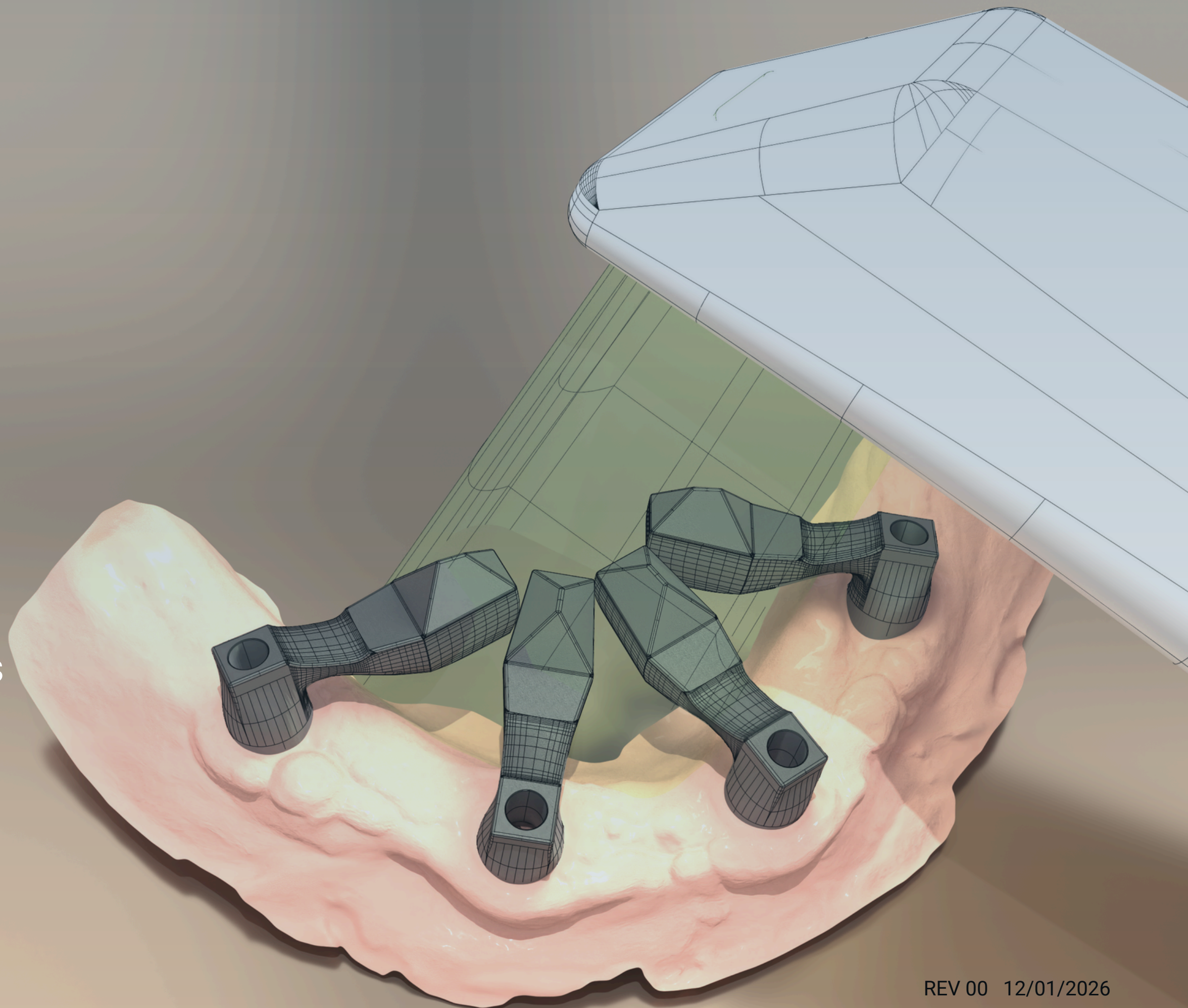


Scans



SHINING 3D

For:
Temporary prostheses on implants
Provisional Denture



Temporary prostheses on implants



Single Case

The screenshot displays the LogiQ software interface for a dental case. At the top, there are three icons of a dental arch with a green checkmark, and a blue icon with a plus sign and a paperclip. Below this is the 'Dentistry Type' section with radio buttons for Restoration, Implant, Orthodontics, Removable Denture, Other (selected), and Intraoral Photogrammetry. The main area is titled 'Preliminary-provisional scans' and features a large 3D model of a dental arch. To the left, there is a list of 'Additional scan' items: OneShot-Gengiva (selected), FLAG01, FLAG02, FLAG03, and FLAG04. Below the list is a 3D model of a dental arch with black markers. At the bottom center, there is a 3D model of a dental arch with a blue base. To the right, there are four 3D models of dental arches, two of which are labeled 'SHINING 3D'.

Recommended for Scan Flags IQ

SHINING 3D

Single Case

The screenshot displays the LogiQ software interface for a dental scan. At the top, there are three icons of a dental arch with a green checkmark, and a blue circular icon with a magnifying glass and a plus sign. Below this is the "Dentistry Type" section with radio buttons for "Restoration", "Implant", "Orthodontics", "Removable Denture", "Other" (which is selected), and "Intraoral Photogrammetry".

The main area is titled "Preliminary-provisional scans" and features a 3D model of a dental arch with a pinkish-red gingival scan overlay. Below this, there is a list of "Additional scan" items (6/6) with a plus sign:

- OneShot-Gengiva
- FLAG01
- FLAG02
- FLAG03
- FLAG04
- SCANREPLYOPTIONAL (highlighted in blue)

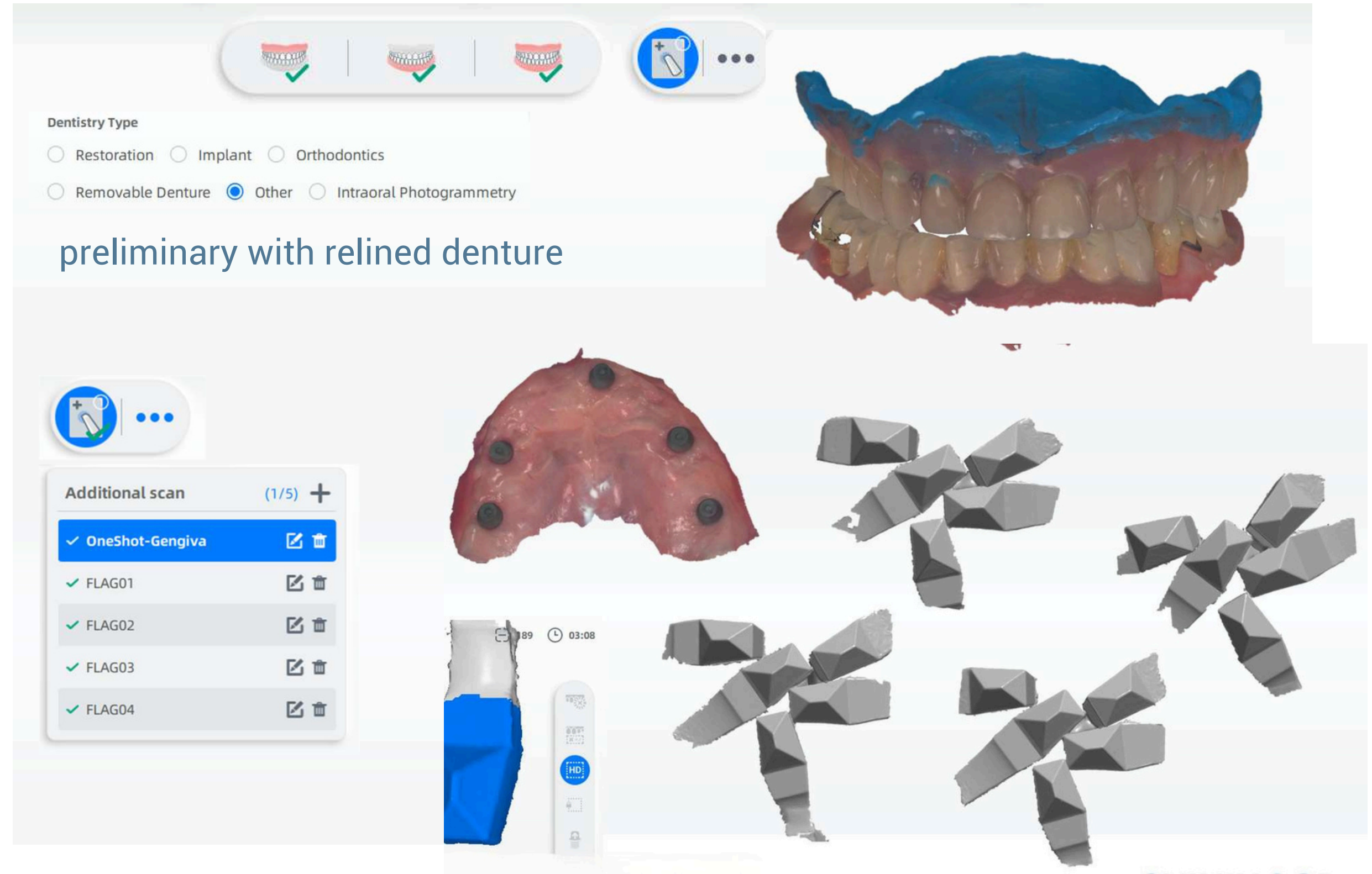
To the right of the list is a 3D model of a dental arch with four grey posts, labeled "Reverse IQ with provisional (optional for lower jaw)".

Provisional Denture



SHINING 3D

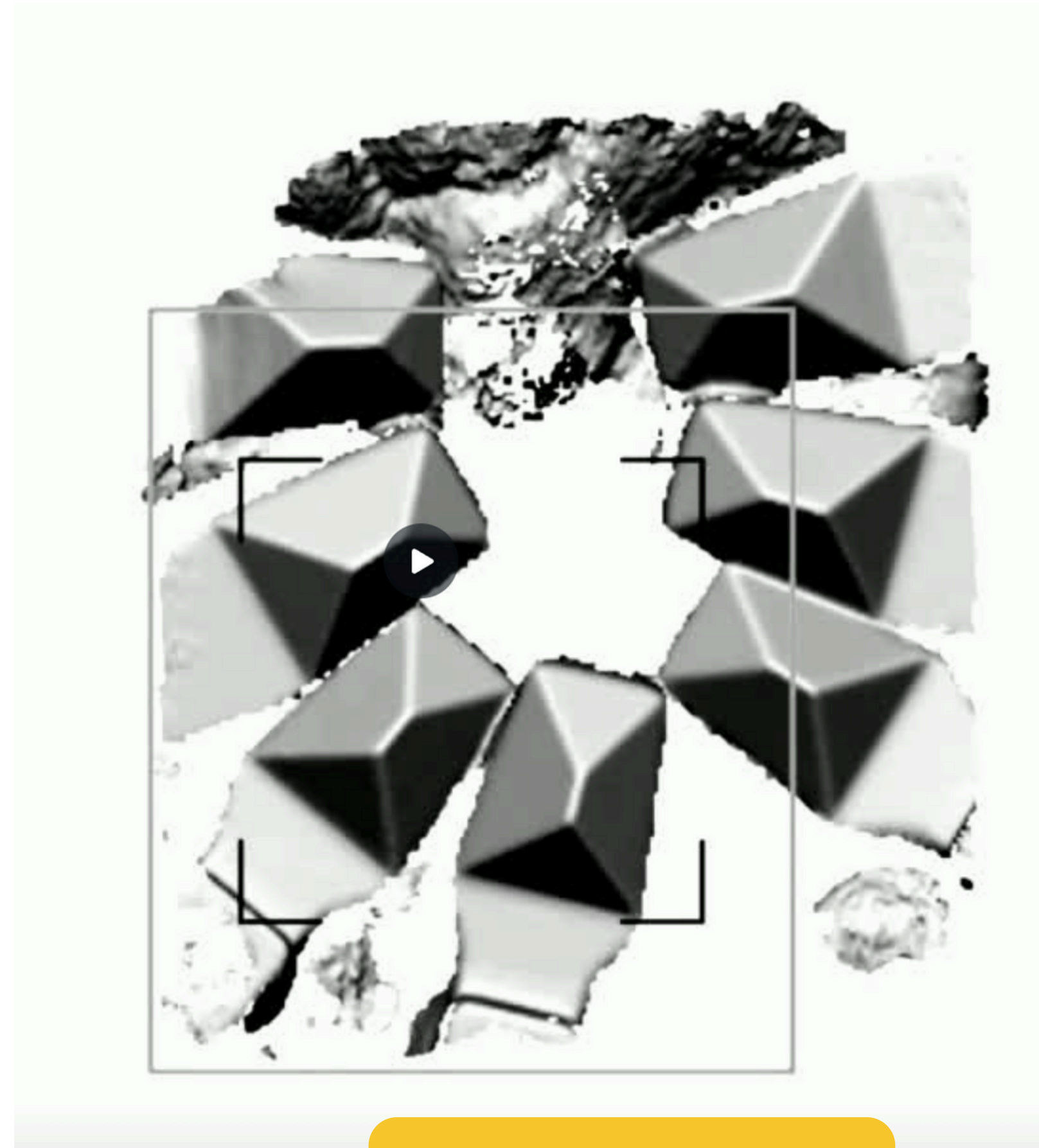
Single Case



Recommended for Scan Flags IQ

Tutorial

Scan of Scan Flag IQ



[Play Video](#)